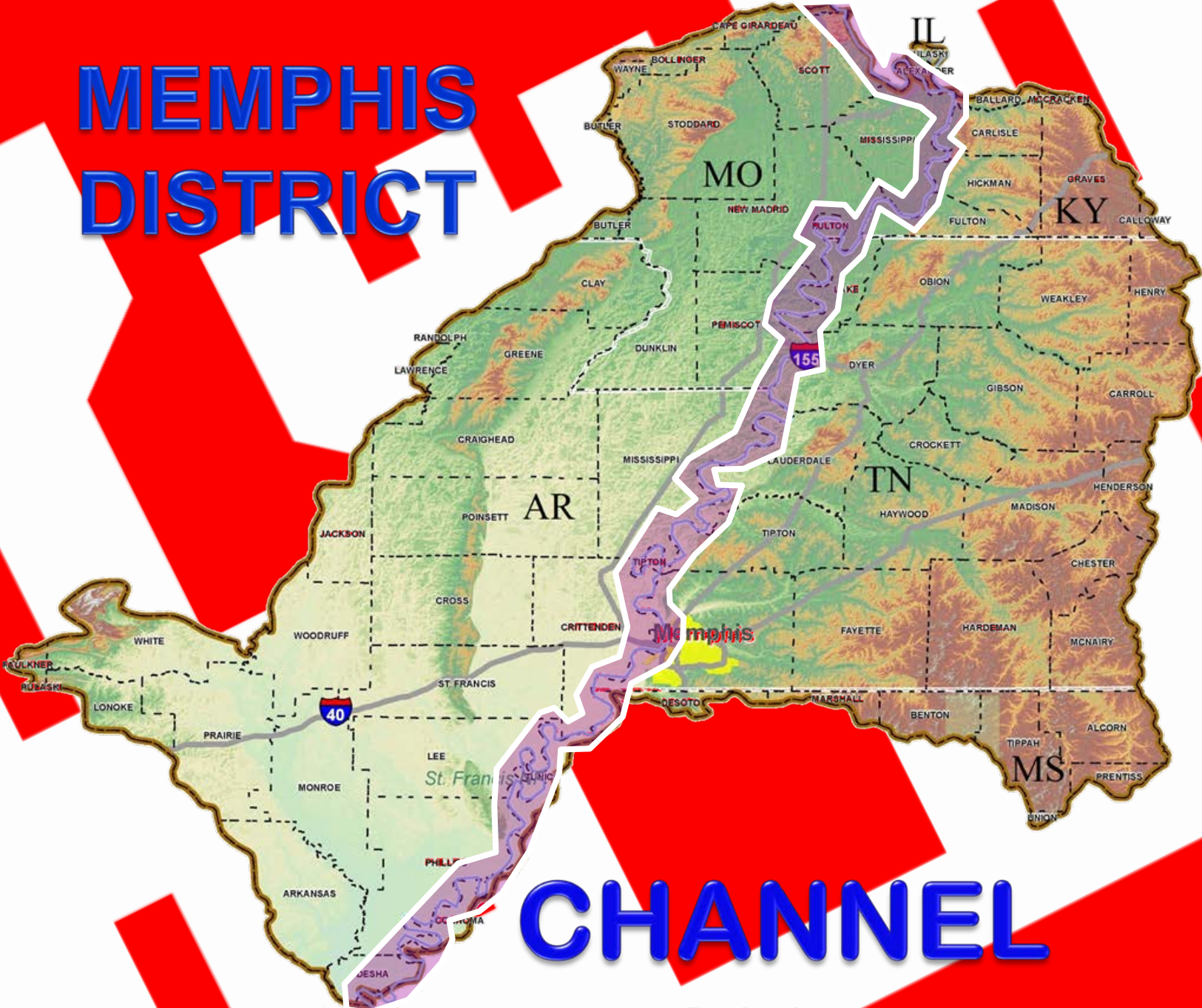




**US Army Corps of Engineers**  
BUILDING STRONG®

# MEMPHIS DISTRICT



# CHANNEL IMPROVEMENT

AR, IL, KY, LA, MS, TN – MEMPHIS DISTRICT LIMITS



US Army Corps  
of Engineers®  
Memphis District

# TABLE OF CONTENTS

BUILDING STRONG®

<b>Memphis District Overview</b>	<b>II</b>
<b>Mississippi Valley Division Map</b>	<b>IV</b>
<b>Memphis District Congressional Map</b>	<b>V</b>

## PROJECTS

Channel Improvement (Maintenance & Construction), AR, IL, KY, MS, MO, TN	1
--	---



US Army Corps  
of Engineers®  
Memphis District

# MEMPHIS DISTRICT OVERVIEW

**BUILDING STRONG®**



The Memphis District was established in 1882, and is one of six districts in U.S. Army Corps of Engineers' Mississippi Valley Division. Encompassing almost 25,000 square miles, the Memphis District is responsible for federal civil works projects in portions of six states -- Arkansas, Kentucky, Illinois, Mississippi, Missouri and Tennessee.

**Memphis District**



**District Employees**

Commanded by Col. Jeffery A. Anderson, the district employs about 500 federal civil service workers. These professionals and craftsmen provide a broad range of technical capabilities to address the Mid-South region's water resource needs. The Memphis District team includes civil, electrical, structural and mechanical engineers, as well as biologists, economists, clerical workers and many skilled laborers.



**Ensley Engineer Yard**

In addition to our downtown Memphis headquarters located in the Clifford Davis/Odell Horton Federal Building, we also have river engineering and marine mooring facilities at Ensley Engineer Yard in south Memphis at McKellar Lake. Field offices are located in Wynne, Arkansas, and Caruthersville and East Prairie, Missouri.

The district has three major mission areas – flood risk management, navigation and environmental stewardship – with our total civil works program averaging more than \$100 million a year.



US Army Corps  
of Engineers®  
Memphis District

# MEMPHIS DISTRICT OVERVIEW

(Continued)

**BUILDING STRONG®**



**Dredging for Navigation**

On the Mississippi River, the Memphis District maintains a minimum 9-foot-deep, 300-foot-wide navigation channel. The Mississippi River is the heart of a vast inland navigable waterway system that extends for 12,350 miles. Channel improvements and maintenance dredging are primary tools for keeping the Mississippi open. More than 250 million tons of river-borne commodities pass through the district's reach of the river each year.



**Emergency Management**

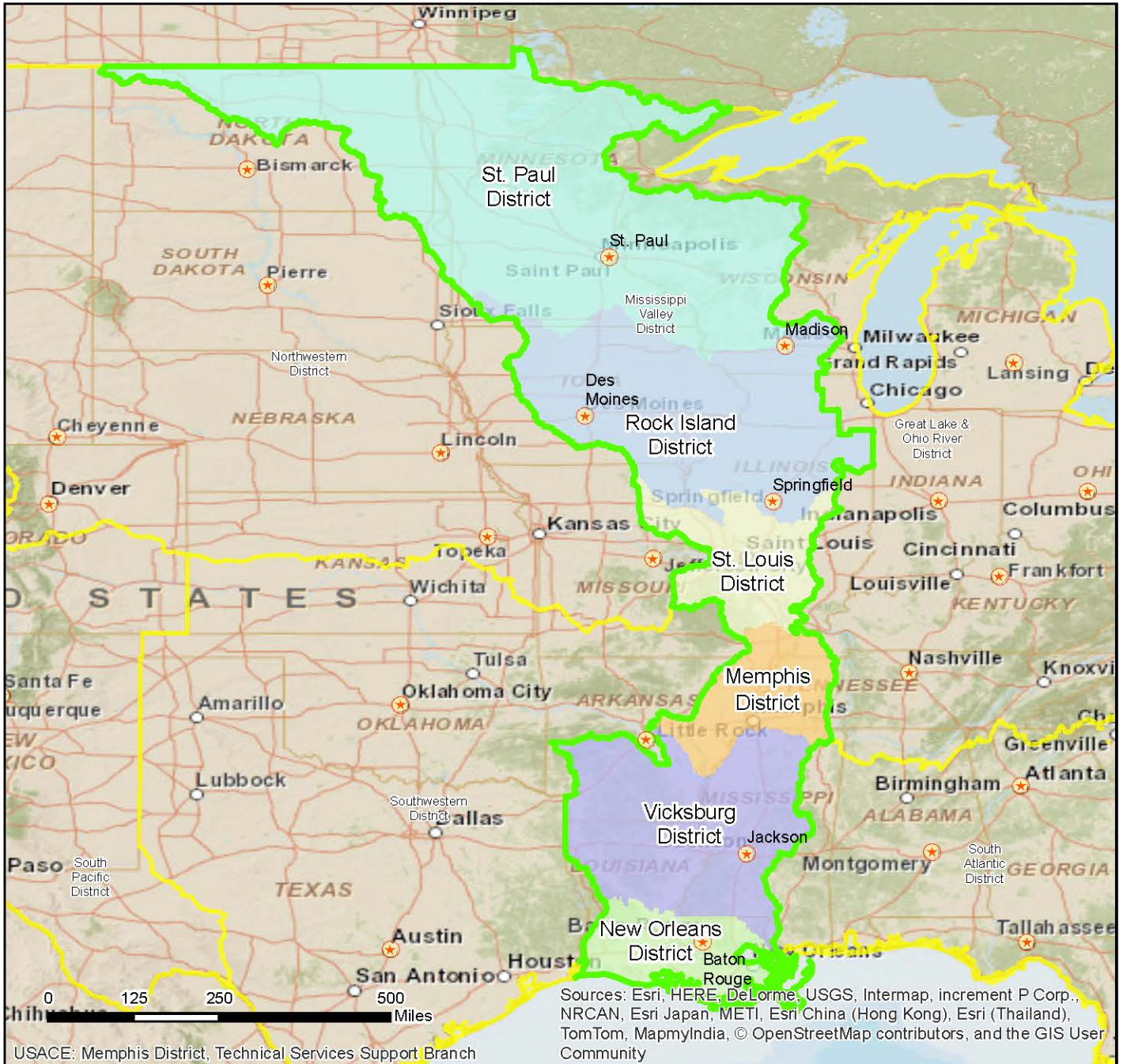
In addition to our main channel navigation and flood risk reduction work, we also provide Emergency Operations planning and response services through our Readiness Branch for natural disasters like floods, hurricanes, earthquakes, tornadoes, and man-made disasters.



**Students in the STEM Program meet with Memphis District biologists**

Overall, the Memphis District is a multi-talented public engineering agency that can solve a variety of civil works problems. We assist other government agencies with their engineering challenges through our "Support for Others Program," and we contribute volunteer community services to the people of the Mid-South. We are also active participants in the Science, Technology, Engineering and Math (STEM) program. The District is a valuable resource, and we will help the people of the six states we serve meet the civil works challenges they face.

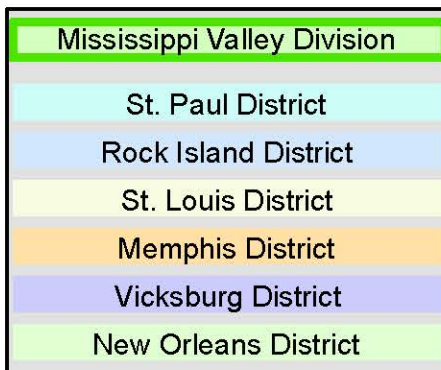
Public safety is the Corps' number one priority. Our pledge is to meet the public engineering needs of your constituents with dedication and professionalism.



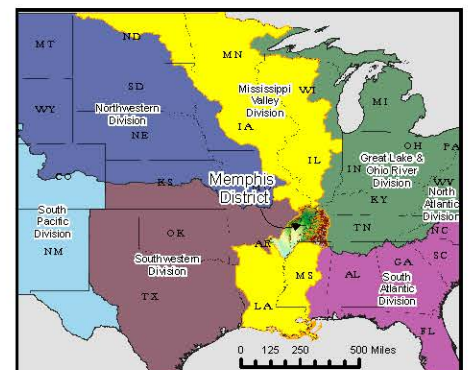
### Vicinity Map



### Legend



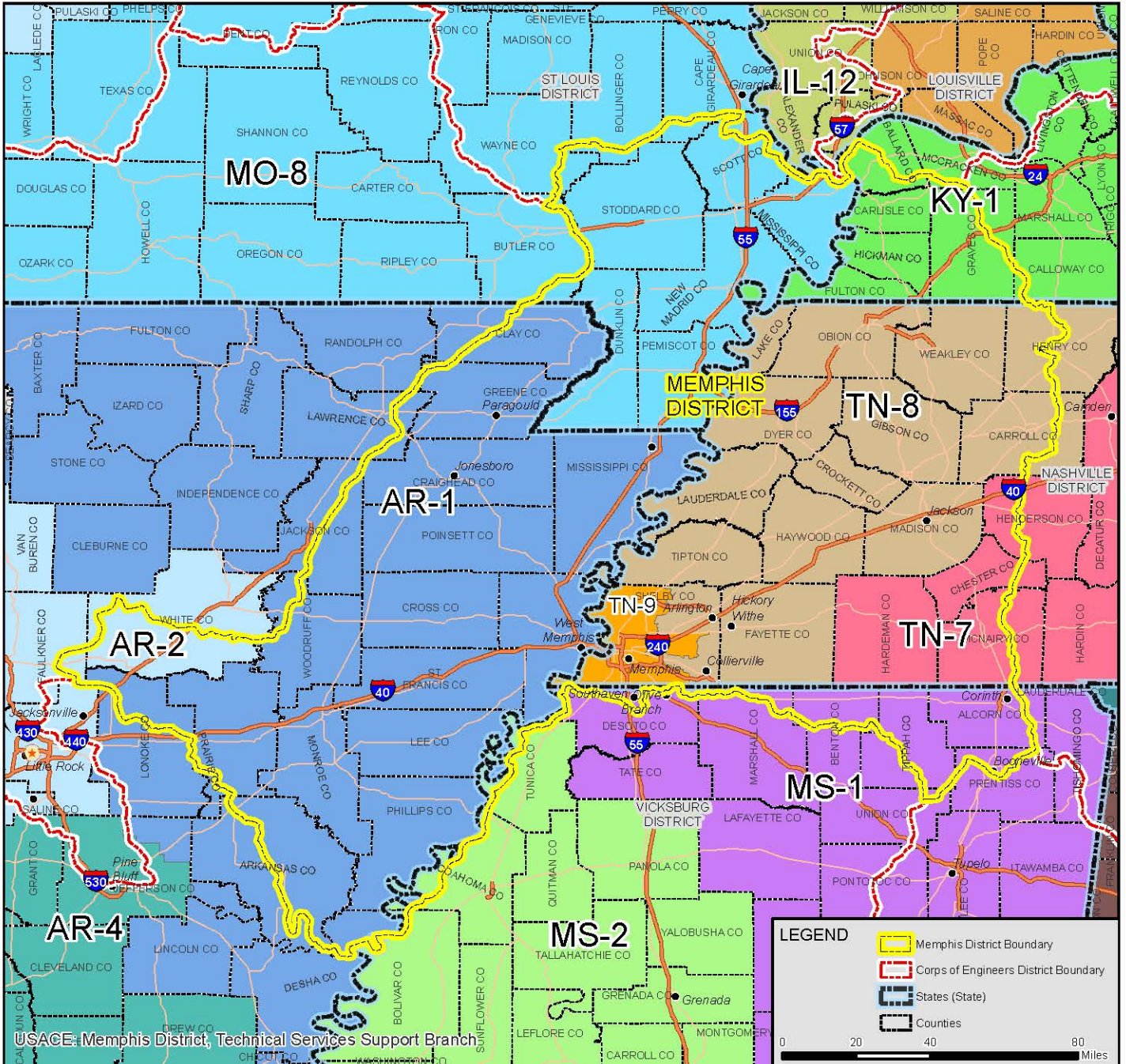
### Location in the Division



# CONGRESSIONAL DISTRICTS WITHIN MEMPHIS DISTRICT AREA OF RESPONSIBILITY



**BUILDING STRONG®**



USACE: Memphis District, Technical Services Support Branch

### ARKANSAS

GOV. Mike Beebe (D)  
SEN. Mark Pryor (D)  
SEN. John Boozman (R)  
REP. Rick Crawford (R AR - 1)  
REP. Tim Griffin (R AR - 2)

### ILLINOIS

GOV. Pat Quinn (D)  
SEN. Richard J. Durbin (D)  
SEN. Mark S. Kirk (R)  
REP. William Enyart (D IL - 12)

### KENTUCKY

GOV. Steven L. Beshear (D)  
SEN. Mitch McConnell (R)  
SEN. Randal Howard "Rand" Paul (R)  
REP. Edward Whitfield (R KY - 1)

### MISSISSIPPI

GOV. Phil Bryant (R)  
SEN. Thad Cochran (R)  
SEN. Roger Wicker (R)  
REP. Alan Nunnelee (R MS - 1)  
REP. Bennie Thompson (D MS - 2)

### MISSOURI

GOV. Jay Nixon (D)  
SEN. Claire McCaskill (D)  
SEN. Roy Blunt (R)  
REP. Jason Smith (R MO - 8)

### TENNESSEE

GOV. Bill Haslam (R)  
SEN. Lamar Alexander (R)  
SEN. Bob Corker (R)  
REP. Marsha Blackburn (R TN - 7)  
REP. Stephen Fincher (R TN - 8)  
REP. Steve Cohen (D TN - 9)



# Channel Improvement, AR, IL, KY, MS, MO, TN (Memphis District Portion Only)

**BUILDING STRONG®**

**Point of Contact**

**Derrick Smith**, Project Manager,  
Ph. (901) 544-3481  
[derrick.a.smith@usace.army.mil](mailto:derrick.a.smith@usace.army.mil)

**Authority:** 1928 Flood Control Act, as amended.

**Appropriation:** Energy and Water Development, Mississippi River and Tributaries, Construction and Maintenance

**Local Interest/Project Sponsor:** No cost-sharing sponsors, but local interests include commercial and recreational users of the Mississippi River.

**Location:** The Memphis District portion of the project limits is defined by the Mississippi River from Cairo, Illinois (Mile 953.8 Above Head of Passes), to the mouth of the White River (Mile 599.0 Above Head of Passes), approximately 355 river miles, of which 229 miles are located adjacent to Arkansas. In addition, the project limits include the right bank of the Ohio River from its confluence with the Mississippi River to Mound City, Illinois, approximately 7 miles.

**Description:** The plan of improvement consists of stabilizing the banks of the Mississippi River to a desirable alignment and obtaining the most efficient flow characteristics for flood risk management and navigation by means of revetments, dikes, and improvement dredging.

**Importance:** The project provides a navigation channel for waterborne transportation and flood risk management features. The project has a benefit-to-cost ratio of 36 to 1 and a remaining benefits-to-cost ratio of 51.4 to 1.

**Status:** Regular funds are being used for construction and maintenance of revetments and dikes, as well as dredging of the Mississippi River to keep the navigation channel open. Disaster Relief Act funds are being used to repair damages to bank revetments and dikes incurred during the 2011 Flood.

**Issues and Other Information: 2011 Flood:** Repairs being performed with Disaster Relief Act funding will restore flood protection features to their original design and re-establish the authorized level of protection. These repairs will significantly reduce the flood risk from post 2011 Flood conditions allowing the system to be ready for future flood events.

**Project Financial Data:**

Estimated Federal Cost:	\$1,330,000,000
Estimated Non-Federal Cost:	1,860,000
Estimated Total Cost:	\$1,331,860,000

**Construction**

**Federal Funding Information:**

Allocation thru FY 2013	\$ 954,540,800
Allocation for FY 2014	9,367,000
Balance to Complete After FY 2014	\$ 366,092,200
President's Budget, FY 2015	11,342,000

**Project Financial Data (Federal):**

Allocation for FY 2014	\$ 35,509,000
House Report, FY 2015	30,409,000
President's Budget, FY 2015	30,409,000

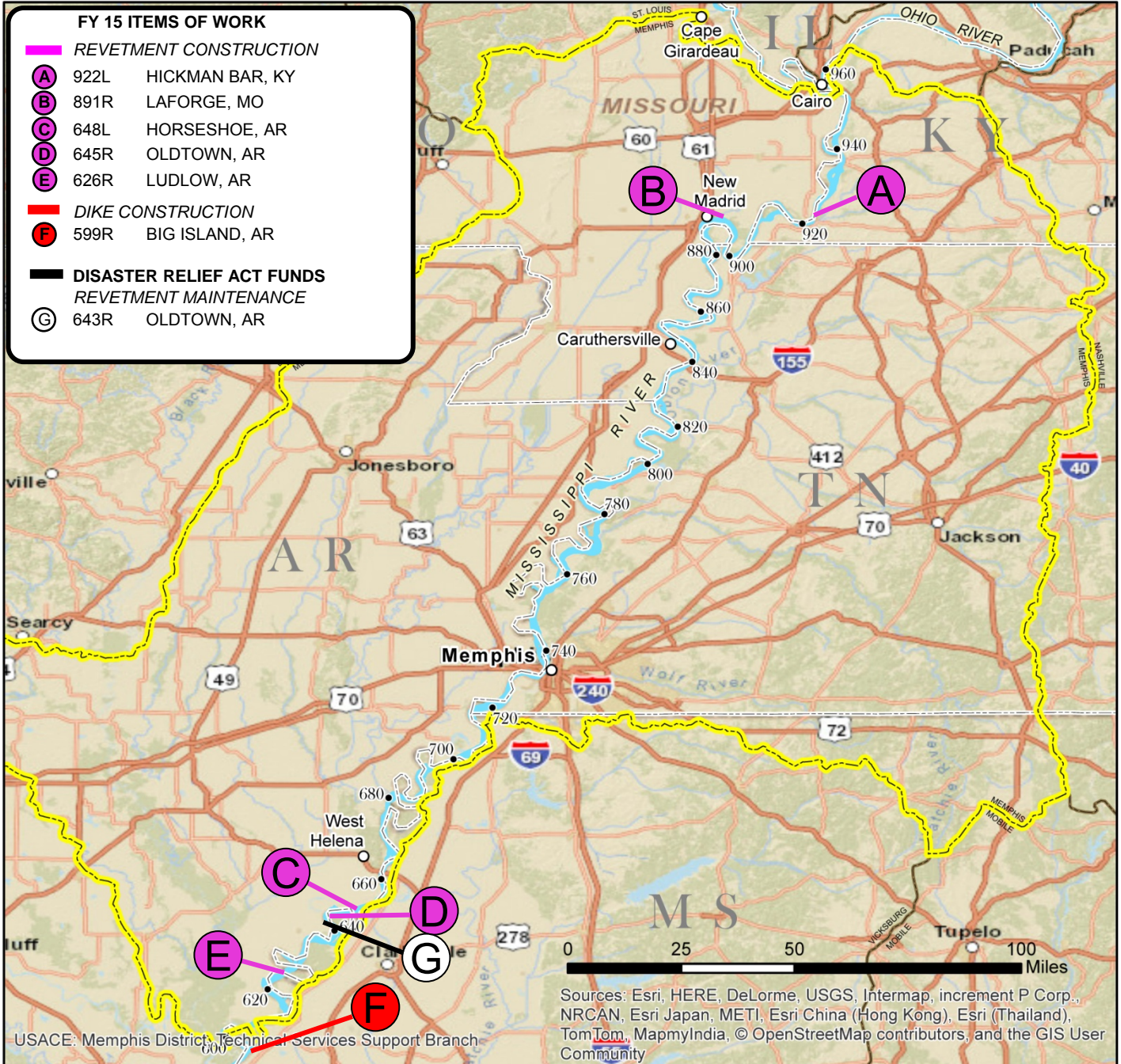
**Maintenance**

**Project Financial Data (Federal): Disaster Relief Act**

Allocation thru FY 2013	\$ 99,149,000
Allocation for FY 2014	34,670,000



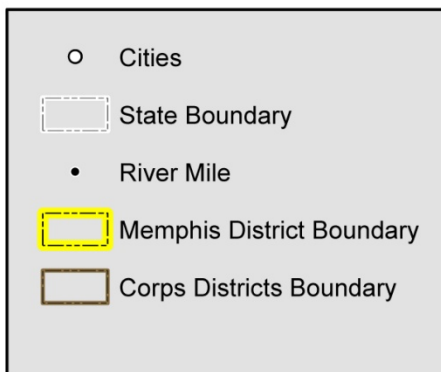
Island 18, MO Stone Revetment Construction



**Vicinity Map**



**Legend**



**Location in District**

